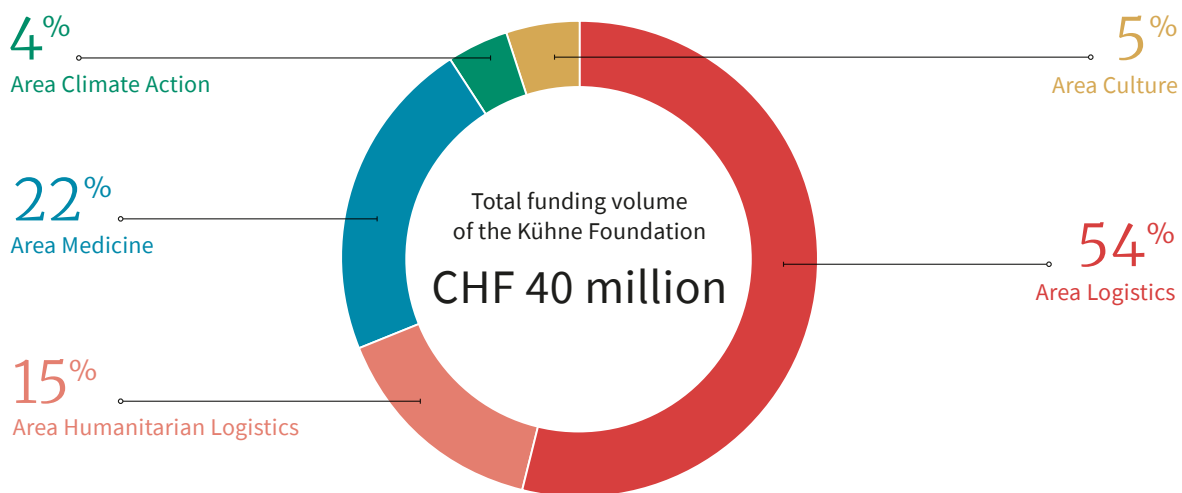


Annual Report 2023



KÜHNE FOUNDATION

Funding volume



Offices



Contents

The Kühne Foundation at a Glance

- 2 Preface by the Founder
- 4 Mission of the Kühne Foundation
- 6 Board of Trustees

- 8 Logistics**
- 9 Kühne Logistics University (KLU)
- 12 HELP Logistics
- 14 LEARN Logistics
- 16 Further logistics projects

- 18 Medicine**
- 18 Medicine Campus Davos
- 19 Christine Kühne – Center for Allergy Research and Education (CK-CARE)
- 20 Cardio-CARE
- 21 Davos BioSciences
- 22 Hochgebirgsklinik Davos

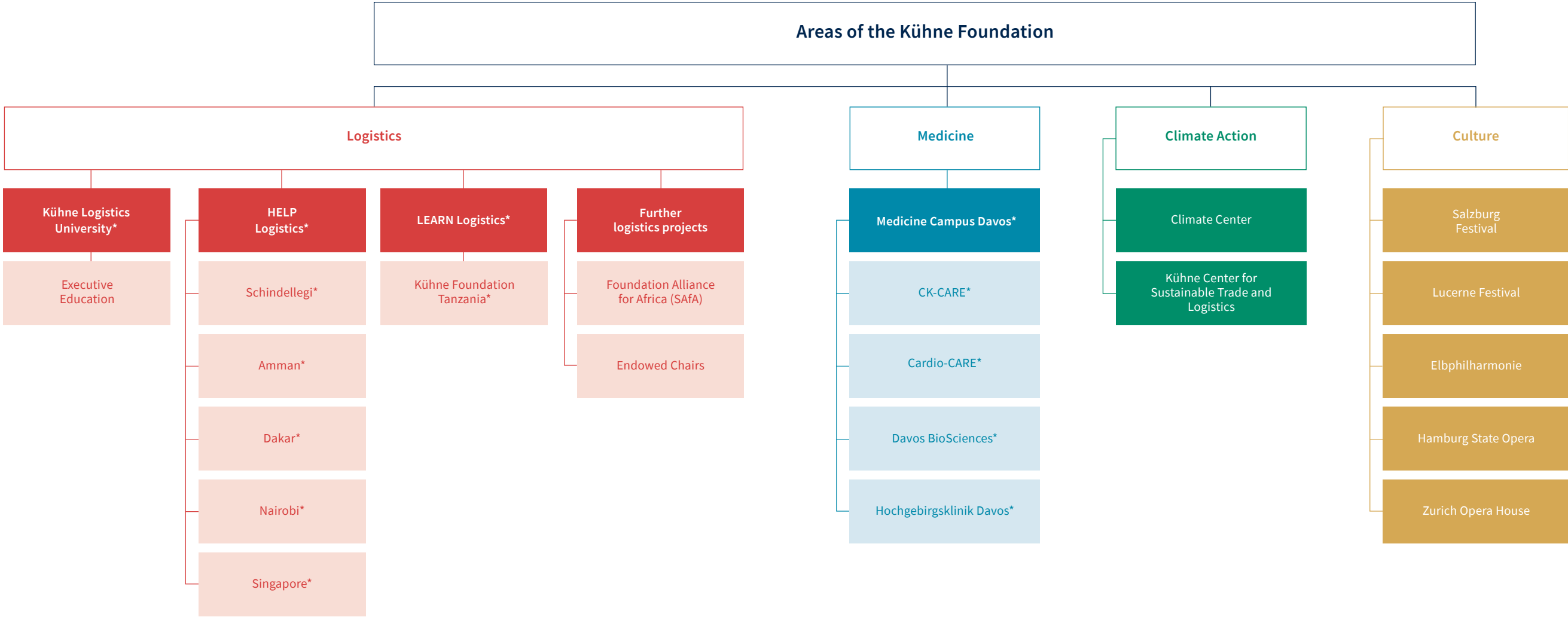
- 24 Climate Action**
- 24 Climate Center
- 27 Kühne Center for Sustainable Trade und Logistics

- 28 Culture**
- 28 Festivals
- 29 Operas and Concert Halls
- 31 Regional

- 32 Contact Information
- 33 Imprint

The Kühne Foundation at a glance

The Kühne Foundation considers itself as an operative foundation and primarily implements its own projects and programs. It works in four main areas: logistics, medicine, climate action and culture. In some cases, the foundation has established its own subsidiaries for its work. In the area of culture, the Kühne Foundation supports its partners with financial donations.



*own subsidiaries

Contents

The Kühne Foundation at a Glance

- 2 Preface by the Founder
- 4 Mission of the Kühne Foundation
- 6 Board of Trustees

- 8 Logistics**
- 9 Kühne Logistics University (KLU)
- 12 HELP Logistics
- 14 LEARN Logistics
- 16 Further logistics projects

- 18 Medicine**
- 18 Medicine Campus Davos
- 19 Christine Kühne – Center for Allergy Research and Education (CK-CARE)
- 20 Cardio-CARE
- 21 Davos BioSciences
- 22 Hochgebirgsklinik Davos

- 24 Climate Action**
- 24 Climate Center
- 27 Kühne Center for Sustainable Trade und Logistics

- 28 Culture**
- 28 Festivals
- 29 Operas and Concert Halls
- 31 Regional

- 32 Contact Information
- 33 Imprint

Preface by the Founder

Dear friends and partners of the Kühne Foundation, dear readers,

For the Kühne Foundation, the year 2023 was characterized by strategic development and growth. Our activities were significantly expanded, particularly in the area of logistics. In addition, the new focus area of climate action was established, and the first projects were launched. Today, the foundation is one of Europe's largest foundations, with an annual budget of CHF 40 million and over 500 employees.

The Kühne Logistics University (KLU) in Hamburg is the flagship of our logistics activities. Since its establishment in 2010, KLU has developed into an internationally renowned university and is characterized by practice-oriented research and teaching. In 2023, 147 students were able to successfully complete their studies. According to student evaluations, KLU regularly ranks among the top universities in Germany, and KLU achieved one of the best ratings of all German universities for Master's degrees in Business Administration. Under the leadership of the new university management, the university intends to grow further and expand its international presence with its own locations in Asia and South America.

Logistics expertise is an important lever for economic development. With our LEARN Logistics program, we therefore strengthen universities in Africa and develop study programs in logistics and supply chain management at an international level. LEARN currently offers

its support in six African countries, at 14 universities and in 39 study programs. Around 10,000 students took part in the local programs in 2023.

HELP Logistics, our subsidiary in humanitarian logistics, is experiencing a steadily growing demand for advice and training to improve logistics processes in disaster relief worldwide. In 2023, HELP implemented 64 projects in 30 countries, focusing on hard-to-reach places in Malawi, Chad and Mongolia, among others. As a central part of their work, the HELP team trains more than 5,000 professionals annually, improving disaster relief worldwide. Together with Kühne Logistics University, HELP also runs the Center for Humanitarian Logistics and Regional Development (CHORD), where academic research is integrated into practical logistics applications.

At the Medicine Campus Davos, the Kühne Foundation enables extensive research programs under the guiding principle of "Personalized Medicine" in allergology and cardiology. The Christine Kühne - Center for Allergy Research and Education (CK-CARE), initiated by my wife, is dedicated to allergy research and treatment. With an extensive biobank and database, new insights into allergy diseases are gained, which can be used for the individual treatment of those affected. With the Cardio-CARE program, the Kühne Foundation is supporting the largest research program to date for

decoding genetic material in the German-speaking world. The aim is to gain a better understanding of cardiovascular diseases and develop new diagnostic and therapeutic options.

In order to further strengthen the research activities of CK-CARE and Cardio-CARE, a second research building is currently being constructed on the Davos campus. At the same time, the Kühne Foundation operates the Hochgebirgsklinik (HGK) on the campus, one of Switzerland's leading rehabilitation facilities for cardiology, allergology, dermatology, pneumology and psychosomatics. In 2023, as in the previous year, the clinic was named Switzerland's second-best specialist clinic for rehabilitation. This is another reason why the Kühne Foundation also supports the research work of doctors at the HGK.

In the new area of climate action, the first projects were initiated in 2023 to decouple prosperity growth from greenhouse gas emissions and accelerate the transition to a low-carbon economy – particularly in Africa. To this end, the foundation is contributing its logistics expertise in the implementation of projects for CO2 reduction, CO2 removal and climate adaptation and is promoting expertise in the field of "green logistics". It also develops innovative ideas on how the transport and logistics sector can promote environmentally friendly and sustainable development at a global and local level.



Prof. Dr. h.c. Klaus-Michael Kühne

In the cultural sector, the Kühne Foundation primarily supports classical music projects in cooperation with leading festivals, opera houses and concert halls in Europe. Its position as a long-standing sponsor of the Salzburg Festival was expanded and extended until 2027. A central component of this sponsorship is the training of young singers as part of the Young Singers Project. The Foundation is also main sponsor of the Lucerne Festival and principal sponsor of the Elbphilharmonie concert hall in Hamburg, whose sponsorship it has also extended until 2026. It intends to increase its support for the Zurich Opera House and promotes regional cultural projects in the canton of Schwyz. The Goldau Landslide Museum, for example, was established thanks to a significant donation from the Kühne Foundation.

I hope that this annual report will give you some insight into the diverse and challenging activities of the Kühne Foundation. I would like to take this

opportunity to thank all employees and partners of the Kühne Foundation for their extraordinary commitment, their support and their willingness to help make a whole series of projects a success. I would also like to thank the members of our Board of Trustees for their valuable contributions and their trusting cooperation.

With best wishes,

Yours sincerely,

Klaus-Michael Kühne
President of the Board of Trustees

Mission of the Kühne Foundation

“Entrepreneurial success should go hand in hand with the promotion of the common good. The Kühne Foundation fulfills this task. With a variety of programs and projects, the founder and the Kühne Foundation also assume their socio-political responsibility.”

Prof. Dr. h.c. Klaus-Michael Kühne

History

The non-profit Kühne Foundation was established by the Kühne family in 1976 in Switzerland. The Kühne Foundation owes its financial strength to the success of one of the world's largest logistics companies, the Kühne+Nagel Group. It is permanently aware of these roots and the responsibility that goes with them. Thanks to its own assets combined with the earning power and assets of Kühne Holding AG, the Kühne Foundation is able to act independently from the influence of third parties.

How we work

The Kühne Foundation sees itself as a Swiss foundation with German roots and a global orientation. It mainly works as an operational foundation and pursues its goals less by promoting third parties; instead by primarily initiating, steering and implementing its own projects and programs, sometimes together with partners. This approach is particularly important in the three major areas of logistics, climate action and medicine. Its projects are characterized by a high degree of practical application. The Kühne Foundation manages its projects with a creative and a long term approach, as well as with a high degree of cost awareness and budget discipline with a lean structure.

Topics

In accordance with the foundation charter, the Kühne Foundation has defined a number of focus areas that are intended to extend over a long period of time and are economically secure:

Logistics

Logistics and logistics expertise strengthen global economic and social development. That is why the Kühne Foundations enable education and research in logistics worldwide.

Medicine

Individualized medicine provides significant innovative impetus for therapy and prevention. The Kühne Foundation therefore specifically supports projects in the field of non-communicable diseases that are committed to this approach.

Climate Action

Combating climate change is one of the greatest challenges of the coming decades. In the climate focus area, the foundation develops and implements innovative ideas on how the transport and logistics sector can support climate-friendly and sustainable development at a global and local level.

Culture

The Kühne Foundation particularly supports excellent classical music projects in collaboration with a number of renowned festivals, opera houses and concert halls in Europe.



Board of Trustees

Prof. Dr. h.c. Klaus-Michael Kühne (President)

After a commercial apprenticeship and several years of thorough training, Klaus-Michael Kühne joined the family business Kühne + Nagel in the early 1960s, became a personally liable partner in 1963 and three years later Chairman of the Management Board. From 1975, he served as Chief Executive Officer and later Chairman of the Board of Directors at the company's international headquarters in Switzerland. He has been Honorary Chairman since 2011. The majority shareholder of the Kühne+Nagel Group is Kühne Holding AG, which was founded by him in 1993 and also holds a 30 percent stake in Hapag-Lloyd AG, one of the world's leading container shipping companies, and a 17.5 percent stake in Lufthansa AG. In addition, Kühne Holding AG owns real estate and is involved in the high-end hotel industry. Together with his parents, Klaus-Michael Kühne founded the Kühne Foundation in 1976, whose most important concern is the promotion of education and training as well as research and science in logistics and the transport industry. The Kühne Foundation is also heavily involved in the field of medicine. In Davos, Switzerland, it maintains a medical campus with two large research programs in allergology and cardiology and operates the Hochgebirgsklinik. A new focus on climate is currently in the conception phase. In the cultural sector, the Kühne Foundation supports festivals, opera houses and concert halls in Europe.

Christine Kühne

Christine Kühne is Klaus-Michael Kühne's wife and supports him in all his projects. The Christine Kühne – Center for Allergy Research and Education (CK-CARE) was founded on her initiative in 2009 to promote allergy research in the long term.

Dr. Thomas Staehelin (Vice President)

Dr. Thomas Staehelin holds a PhD in law and has been a partner of Fromer Advokatur und Notariat based in Basel since 1981. His expertise includes international mandates, corporate law, mergers and acquisitions, tax law, contract and commercial law as well as banking and stock market law. Dr. Staehelin is a member and/or President of the Board of Directors of several Swiss and international companies. Dr. Staehelin has been a member of the Board of Trustees and its Vice-President since 1998.

Michael Behrendt

After studies in law, Michael Behrendt joined VTG Vereinigte Tanklager und Transportmittel GmbH in 1985 and became Managing Director in 1994. In 1999, he was appointed Chief Executive Officer of VTG Lehnkering AG. Michael Behrendt became Chairman of the Executive Board of Hapag-Lloyd AG in 2002; and has taken over as Chairman of the Supervisory Board of Hapag-Lloyd AG in 2014. Furthermore, he is Honorary President of the Übersee-Club e.V. in Hamburg and board member of

the non-profit science organisation Stifterverband für die Deutsche Wissenschaft e.V. Mr. Behrendt was first appointed to the Board of Trustees of the Kühne Foundation in 2005. From 2008 to 2016, he sat on the Board of Trustees of the Klaus-Michael Kühne Foundation.

Dr. Thomas Buberl

Dr. Thomas Buberl began his career as a consultant at the Boston Consulting Group for the banking & insurance sector and joined the Winterthur Group in 2005. He moved to Zurich Insurance in 2008 as CEO for Switzerland. He was appointed CEO of AXA Germany in 2012, then CEO of the Global Health business line in 2015, before being appointed CEO of the AXA Group in 2016. He holds a Master of Economics degree from WHU Koblenz (Germany), an MBA from Lancaster University (UK) and a PhD in Economics from the University of St. Gallen (Switzerland). He is a member of the IBM Board of Directors and sits on the Board of Trustees of the World Economic Forum. Thomas Buberl has been a member of the Board of Trustees of the Kühne Foundation since November 2023.

Dr. Jörg Dräger

Dr. Jörg Dräger studied Physics and Economics in Hamburg and New York. After his graduation, he worked for Roland Berger Strategy Consultants in Frankfurt/Main. He returned to Hamburg as CEO of the Northern Institute of Technology. From 2001 to 2008 Dr. Dräger took office as Hamburg's

(independent) Minister of Science and Research. In addition, he was a member of the Conference of Ministers of Education and Cultural Affairs and a deputy member of the German Bundesrat. From 2008 till the end of 2021 he was a member of the Executive Board at the Bertelsmann Foundation. Dr. Dräger was first appointed to the Board of Trustees in 2008 and has been the Executive Director of the Board of Trustees of the Kühne Foundation since 2022.

Dr. Wolfgang Peiner

Following the completion of an apprenticeship at Kühne+Nagel Hamburg, Dr. Wolfgang Peiner studied business administration in Hamburg and Kansas/USA. Thereafter, he worked as tax consultant and auditor at Arthur Andersen & Co., the Werner Otto Group and as Director, later on as Chief Executive, of the Gothaer Group. During those times, Dr. Peiner was a member of the Board of Directors of the Treuhandanstalt and its successor organisation BvS, Kühne + Nagel International AG as well as a member of the Supervisory Board of Deutsche Lufthansa AG and Friends Provident. From 2001 to 2006 Dr. Peiner was Senator of Finance of the Hamburg state government, at the same time, he was Federal Treasurer of the CDU party. In the years 2010 and 2011, he was founding president of the Kühne Logistics University. He was also a member of the Board of Directors of Kühne Holding AG from 2008 to 2022. Dr. Peiner has been a member of the Board of Trustees since 2005.

Dr. Marc Pfeffer

Dr. Marc Pfeffer is admitted to the bar in Switzerland and Germany. He received his doctorate with distinction from Saarland University and worked for the FTC, Washington D.C., USA and the Federal Cartel Office, Berlin, at the end of the 1990s. Various management positions included working for the DB AG Group from 2002 to 2006, where he last served as General Counsel of DB Netz AG, Frankfurt. After the IPO was canceled, Dr. Pfeffer moved to Switzerland in 2006 and was Head of International Legal Affairs and later Group Legal Counsel at OC Oerlikon until 2012. In 2013, Dr. Pfeffer advised Kühne Holding AG as attorney-at-law and has been Group General Counsel at Kühne+Nagel since 2014, where he also became Corporate Secretary of the Board of Directors in 2019. He served as a Member of the Board of Directors of Ruf Holding AG from 2008 to 2019. From 2019 to the end of 2022 he was Executive Director and member of the Board of Directors of Kühne Holding AG. When he joined the Management Board of Kühne + Nagel International AG on January 1, 2023, he resigned from this office. He has been a member of the Board of Trustees of the Kühne Foundation since April 2023.

Tobias Staehelin

Tobias B. Staehelin is admitted to the bar and specializes in corporate law. He graduated from the University of St. Gallen with a lic. iur. degree. In addition, he holds a CEMS Master in International Management, an LL.M. from Northwest-

ern University, USA, and the Instituto de Empresa, Spain. Tobias B. Staehelin has operational experience in Asia and Europe. From 2021 to 2024 he was a member of the Group Executive Committee of the Schindler Group, responsible for Corporate Human Resources. He is currently member of the Board of Directors of Schindler Aufzüge AG and Schindler Holding AG and since 2024 member of its Supervisory and Strategy Committee. He has been a member of the Board of Directors of Kühne + Nagel International AG since 2021 and a member of the Board of Trustees of the Kühne Foundation since 2023.

Prof. Dr. Jens Weidmann

Prof. Dr. Jens Weidmann, who holds a doctorate in economics, studied in Aix-en-Provence and Bonn. He started his career at the International Monetary Fund, then became Secretary-General of the German Council of Economic Experts, and subsequently headed the department for monetary policy and monetary analysis at the Bundesbank. In the Federal Chancellery, he led the department of economic and financial policy and was most recently the personal representative of the Chancellor for the economic summits of the G8 and G20 nations, before being appointed President of the Bundesbank in 2011. After leaving the Bundesbank in 2021, Weidmann was elected Chairman of the Supervisory Board of Commerzbank AG in 2023 and was appointed as Professor at the Frankfurt School of Finance and Management. Since November 2023, he has been a member of the Board of Trustees of the Kühne Foundation.

As of December 31, 2023

Logistics

Logistics forms the backbone of international trade and prosperity. However, its importance is not yet sufficiently anchored in academic research and teaching. That is why the Kühne Foundation runs the Kühne Logistics University to provide scientific support for new developments in logistics and supply chain management and to promote the training and further education of managers. It is also active in the field of humanitarian logistics and supports humanitarian organizations and governments in optimising disaster relief through HELP Logistics AG. With its LEARN Logistics education program, the Kühne Foundation contributes to the development of logistics expertise in developing and emerging countries.





About 400 students from 60 KLU Graduation 2023 nations are currently studying at KLU.

KLU Graduation 2023

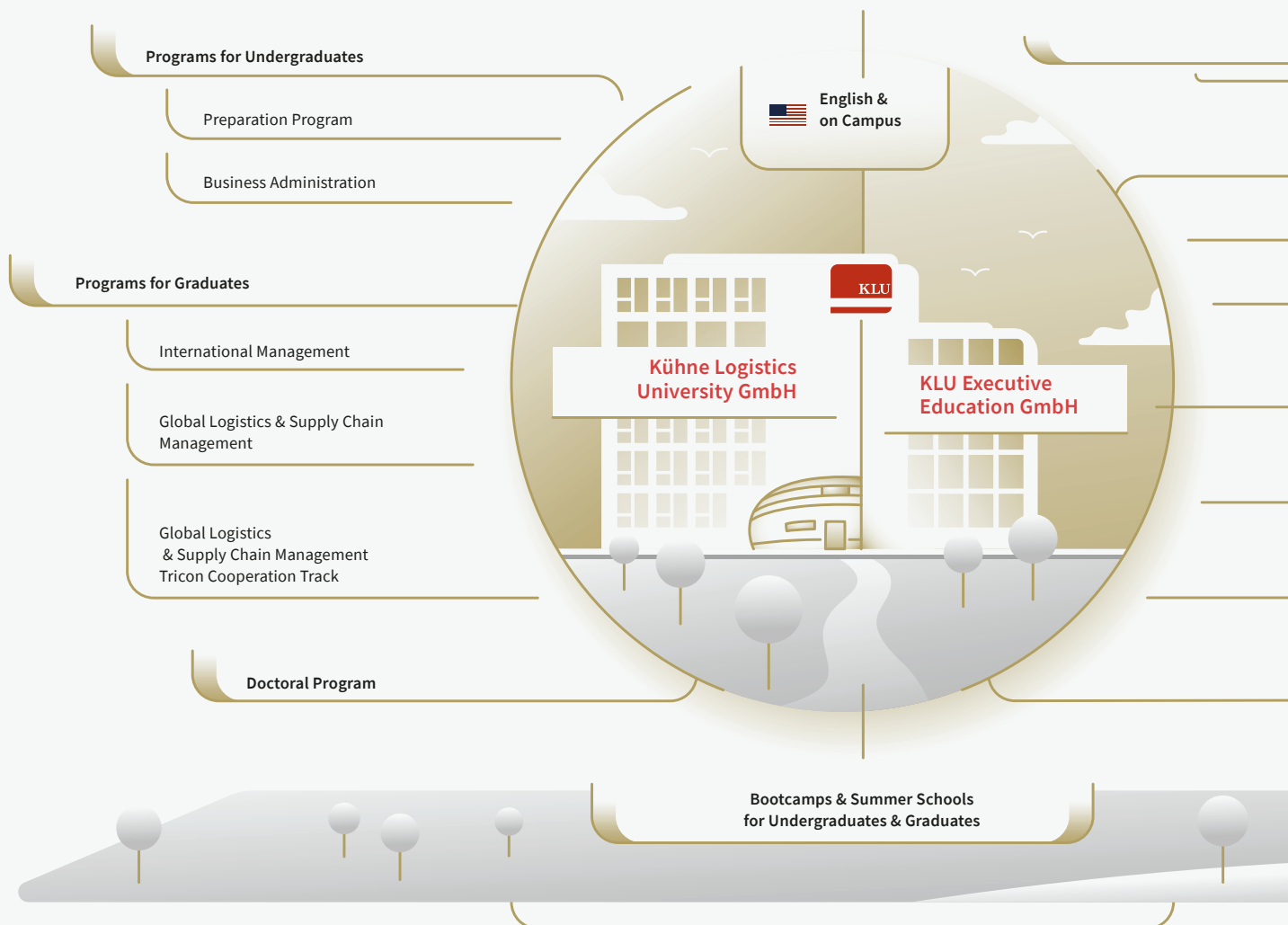
Kühne Logistics University (KLU)

Since being founded in 2010, KLU – Kühne Logistics University has been the flagship of the Kühne Foundation in the field of logistics, shaping the specialists and managers of tomorrow. The state recognized university contributes to the professionalization of the logistics industry and its future-oriented and sustainable further development through excellent research, education and training. By training the specialists and managers of tomorrow, KLU lives up to its claim of establishing expertise in logistics and management in executive

floors and company boards worldwide. With KLU, the Kühne Foundation has acknowledged the outstanding importance of logistics and supply chain management for the global economy, while also shaping the academic landscape and increasing the visibility of this economic sector. In 2023, KLU was accredited by the German Science and Humanities Council (Wissenschaftsrat) for another ten years. With Prof. Andreas Kaplan and Dr. Immo Schmidt-Jortzig, a new President and Chancellor took office in 2023.

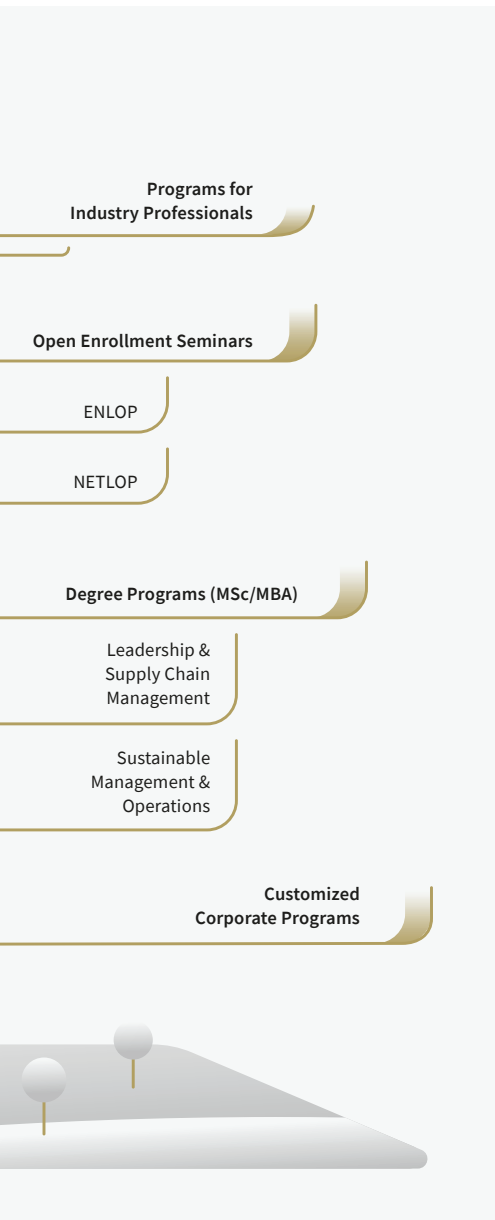
KLU is one of Germany's
top three universities for
supply chain research
(SCM Journal List Ranking)

Program portfolio





Students on the campus



Education and training

A bachelor's degree program, four master's degree programs including a part-time MBA, and a structured doctoral program offer excellent academic environment and career prospects for over 400 students from around 60 nations. Certificate programs and seminars for specialists and managers complement the range of courses on logistics, supply chain management and corporate management. An international faculty of over 30 professors teaches in English on a modern campus in Hamburg's HafenCity. Student evaluations regularly place KLU among the top universities in Germany in the Center for Higher Education (CHE) university rankings. KLU achieved one of the best ratings of all German universities for the Master's degree in Business Administration.

Practice

Kühne Logistics University promotes exchanges between science and business through research projects, doctoral theses and in numerous event formats. Research, education and training alike are characterized by a clear practical orientation.

Research

The focus is on sustainability, digital transformation, entrepreneurship and innovative value creation, especially in the areas of transport, global logistics and supply chain management. Three research centers pursue projects in sustainable, maritime and humanitarian logistics, each in cooperation with partners in industry and practice. KLU is one of Germany's top three universities for supply chain research (SCM Journal List Ranking). The current WirtschaftsWoche ranking also underscores the university's excellent research, here, the university ranked second for business administration among all private business schools in German-speaking countries, measured by research output per professor.

Further information:
<https://www.klu.org/>



Students at the graduation ceremony

HELP Logistics Humanitarian Logistics

Established in 2014 as a non-profit subsidiary of the Kühne Foundation in Switzerland, HELP Logistics AG operates from Amman, Dakar, Nairobi, Hamburg, and Singapore. Its team of 25 professionals is dedicated to improving supply chains in the humanitarian and development context.

HELP Logistics offers a range of services, including supply chain analysis, further education, applied research, and outreach, all aimed at enhancing the effectiveness and efficiency of humanitarian operations. Its efforts strive for impactful changes and align with global initiatives like the Grand Bargain to reform humanitarian assistance and the Sustainable Development Goals (SDGs).

Through collaborations with over 30 diverse organizations, HELP Logistics tackles crucial challenges in humanitarian logistics. Its partnership with the Kühne Logistics University (KLU) and the Center for Humanitarian Logistics and Regional Development (CHORD) synergizes academic research and practical logistics solutions, refining the approach to humanitarian aid.

Weiterführende Informationen:
<https://help-logistics.org>

Center for Humanitarian Logistics and Regional Development (CHORD)

The Center for Humanitarian Logistics and Regional Development (CHORD) is a partnership between Kühne Logistics University (KLU) and HELP Logistics. It combines academic research and operational expertise to develop disaster preparedness, resilience, health-care, and sustainability solutions. The Center has conducted impactful research with organizations like the World Food Programme (WFP) and the United Nations Population Fund (UNFPA).

Utilizing HELP Logistics' networks, CHORD conducts an annual survey in the humanitarian logistics sector, providing insights for strategic decision-making and industry change. CHORD also shares its findings through publications and events, contributing to advancing humanitarian logistics practices.



Services 2023

**Supply Chain Analytics**

Utilizing data analytics and visualization techniques, HELP Logistics strengthens anticipatory action and supports evidence-based operational, tactical, and strategic decision-making. Especially in the fields of resilience and sustainability, HELP is positioning itself as a critical player in shaping the future of logistics networks.

Professional Development

Excelling in delivering tailor-made learning modules, both in-person and through online platforms, HELP Logistics supports the continuous education of thousands of supply chain professionals every year. Additionally, its

internship programs at Kühne Logistics University (KLU) and partner institutions globally empower, train, and cultivate future leaders in supply chain management.

Thought Leadership

Building upon the unique expertise of its team and the findings of numerous analysis projects, HELP is stepping increasingly into the role of forward-thinking leader in the sector. Collaborating with renowned experts across various fields, HELP supports a paradigm shift in humanitarian supply chains at the global and local levels, disseminating innovative solutions that drive tangible positive change.

LEARN Logistics

Logistics and supply chain management (LSCM) are key factors and the backbone of global trade and economic development. The LEARN Logistics education program initiated by the Kühne Foundation therefore supports universities in African countries in the sustainable development and expansion of teaching and research capacities in the field of logistics and supply chain management. LEARN pursues the approach of cross-functional logistics systems and promotes other sectors such as health and agriculture in addition to the commercial market. The aim is to promote an efficient logistics and supply chain management system and thus a competitive and sustainable economy in low-income countries through high-quality training.

LEARN works in regions where public or private funding and local resources are insufficient to deliver the required LSCM education and to meet international quality standards. Together with local universities, the program offers training opportunities tailored to the specific needs and requirements of the countries. The development of such a high-quality education system is achieved through multilateral partnerships between internationally leading higher education institutions in high-income countries and selected universities in low-income countries in East and partly West Africa. LEARN currently offers its support in six African countries, at 14 universities and in 39 study programs.



Excursion with participants of the LEARN program

Partners and cooperations

LEARN works with several partners and in collaborations. For example, the program is part of the Senselet project, which aims to sustainably improve supply chains in the healthcare sector in Ethiopia through targeted educational programs. The project is supported by the Kühne Foundation, Novo Nordisk and the World Diabetes Foundation, among others.

In 2023, approximately 10,000 students were enrolled across the local university degree programs supported by the LEARN program.

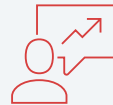


Service portfolio LEARN



Curriculum development:

Design of high-quality study programs at international level



Research support:

Implementation of local research projects in collaboration with highly experienced academics from the global network of the Kühne Foundation



Train-the-Trainer:

Offering continuous training and further education for faculty in special knowledge and didactics



Internally Guest lecturers:

Top-class guest lecturers from theory and practice



Field Trips:

Practical teaching of specialized knowledge in Bachelor and Master degree programs



Doctoral scholarships:

Increase of faculty capacities with highly qualified lecturers who continue the implementation of the study programs



Teaching methodology:

Training in modern and interactive teaching methods



Summer schools:

Promotion of international exchange of students at undergraduate- and post-graduate level



Conferences:

Engaging faculty members from Africa in the international academic community

Further logistics projects



Visit to Ethiopia in 2023

Foundation Alliance for Africa

Together with the Hanns R. Neumann Foundation, the Max and Ingeburg Herz Foundation and the Rossmann Foundation, the Kühne Foundation established the “Foundation Alliance for Africa” in 2021. Each of the four charitable foundations contributes its specific knowledge and experience from different areas of development work to joint projects to improve living conditions in the project countries in sub-Saharan Africa. The Kühne Foundation supports the cooperation with its logistics expertise.

The first project started in May 2021 in Ethiopia, where prospects are to be improved in two rural regions, particularly for young people. The Kühne Foundation works directly in the project regions as well as with universities in the regional centers and in Addis Ababa. Training courses on topics such as agricultural logistics and entrepreneurship as well as

research projects are carried out jointly. The total budget amounts to EUR 12 million for an initial period of four years. Ultimately, 70,000 youth are expected to benefit directly and indirectly from the project's measures.

A second project began in Tanzania in 2023. Like in Ethiopia, SAfA Tanzania pursues a cooperative approach in which the Kühne Foundation takes on the task of training and further educating the young target group in the fields of logistics, transportation and sustainability. In the area of research and training of local trainers, the Kühne Foundation also cooperates with two universities in Tanzania. Both projects are carried out in close cooperation with and supported by the Federal Ministry for Economic Cooperation and Development of the Federal Republic of Germany (BMZ).

With a total budget of EUR 12 million for an initial period of four years, 70,000 people are expected to benefit directly and indirectly from the projects.

Endowed Chairs

In addition to running the Kühne Logistics University, the Kühne Foundation supports chairs at two other universities in order to strengthen the importance of logistics as a scientific discipline. The chairs sponsored by the Kühne Foundation work together with the Kühne Logistics University.

Competence Center International Logistics Networks, Department of Logistics, Technical University of Berlin

The role of logistics in globally networked value creation systems is constantly increasing. The Kühne Foundation has been funding the International Logistics Networks Competence Center (ILNET, headed by Prof. Frank Straube) at the TU Berlin since 2005 to support research and the further development of education and training in the context of international logistics. ILNET examines trends and strategies in international logistics networks, the management of risks and volatility as well as logistical challenges and practical solutions in sub-Saharan Africa. To this end, ILNET works closely with the African universities sponsored by the Kühne Foundation (including Addis Ababa University and the University of Rwanda), the Kühne Logistics University and a network of industry partners, institutions and associations. This has also made it possible to acquire further research projects with a focus on sub-Saharan Africa, funded by the DAAD, among others.

The interaction between science and industry results in dissertations and habilitation treatise, case studies for training and further education, co-working seminars for students and much

more. The content generated is also integrated into a logistics planning tool developed at ILNET, the TUB Logistics Navigator (<https://navigator.logistik.tu-berlin.de>). This supports the strategic planning of logistics networks and also provides training and further education content as well as case studies. ILNET is also expanding a pan-African research cluster with the help of the Kühne Foundation's LEARN program in order to facilitate a structured exchange of knowledge between universities and to initiate joint, cross-national research work to strengthen logistics performance in sub-Saharan Africa.

Chair of Logistics at the School of Management at the Universidad de los Andes Bogotá

Since 2017, the Kühne Foundation has been supporting the logistics chair at the School of Management of the Universidad de los Andes in Bogotá, Colombia. Prof. Dr. Gordon Wilmsmeier holds the endowed chair and teaches courses in logistics and operations research in the Master's programs as well as in an Executive MBA and Executive Education. He is also an Associate Professor of Shipping and Global Logistics at KLU and Director of the Hapag-Lloyd Center for Shipping and Global Logistics (CSGL). Since 2018, the newly developed Master's program Supply Chain Management & Technology with a specialization in Shipping and Port Logistics has been offered at the faculty in Bogotá. Research at the department is oriented towards the current problems in Colombia and Latin America. Central to this are the topics of decarbonization, technological change in shipping, ports and logistics.

The excellence and special quality standards of the faculty are reflected, among other things, in the highest accreditation of the National Accreditation Council and, at the international level, in the so-called Triple Crown accreditation (EQUIS, AACSB and AM-BA). This makes the faculty the only one in Colombia among the most renowned business schools in the world.

Panel discussion at a logistics conference organized by the University of Rwanda and TU Berlin (November 2023, Kigali, Rwanda)



Medicine

Allergies and cardiovascular problems are widespread diseases that affect billions of people worldwide. For more than ten years, the Kühne Foundation has therefore been supporting a pioneering program for the research and treatment of allergies with a focus on neurodermatitis, which is based at the Medicine Campus Davos. In addition to running the Hochgebirgsklinik, the foundation is also increasingly dedicated to research into heart disease. The aim is personalized medicine, in which the individual circumstances and requirements of each patient are addressed with increasing precision.



Medicine Campus Davos

The Kühne Foundation runs several medical programs on the grounds of the Medicine Campus in Davos. There, CK-CARE AG (Christine Kühne – Center for Allergy Research and Education), HGK (Hochgebirgsklinik) Davos, Cardio-CARE AG, Davos BioSciences AG, and the independent SIAF (Swiss Institute for Allergy and Asthma Research) work closely together, combine therapy, research, and education in the fields of allergy and cardiovascular diseases. The Kühne Foundation manages its programs in Davos through the non-profit umbrella company Medicine Campus Davos AG to create an efficient center for

interdisciplinary cooperation. The focus is particularly on translational scientific approaches geared towards immediate benefits for patients (“from bench to bedside & from bedside to bench”). With precision medicine, new treatment approaches are developed that are individually tailored for each patient. These research approaches are based on data from large patient registries linked to biobanks, whose information is evaluated using sophisticated methods of data analysis and artificial intelligence.

Further information:
<https://medizincampusdavos.ch/>



50 CK-CARE scientists met at the team meeting in Davos in October 2023

Christine Kühne – Center for Allergy Research and Education (CK-CARE)

CK-CARE uses a database and biobank, in which information and biosamples are collected from around 3,000 sick and healthy people.

In 2009, the Kühne Foundation established the non-profit “Christine Kühne – Center for Allergy Research and Education” (CK-CARE) with locations in Davos, Augsburg, Bonn, St.Gallen and Zurich. The main pillars of the initiative are highly qualified and well-networked research in the field of allergies, particularly atopic dermatitis, and the training of medical professionals to address the deficits in the areas of diagnosis and treatment of people with allergic diseases.

CK-CARE is an innovative project for the research, therapy and prevention of allergies with a focus on atopic dermatitis and is currently the largest private initiative in Europe in the field of atopic diseases. CK-CARE works from its headquarters in Davos in cooperation with four university institutes. The three centralized CK-CARE research groups, the education department, the biobank

with the database, and administration departments are located on the Medicine Campus Davos; also the SIAF (Swiss Institute for Allergy and Asthma Research), another scientific partner of CK-CARE, is based in a building on campus. The projects of the network are characterized by the “medical translation” approach with results in research, transfer to the medical practice and various educational formats. CK-CARE uses two clinical observational studies conducted by the network and collected in a data- and biobank. This biobank currently contains information and biosamples from around 3,000 probands (diseased and non-diseased). This enables data analyses with the goal to further improve diagnosis, treatment and prevention of allergic diseases.

Further information:
<https://ck-care.ch/>

Cardio-CARE

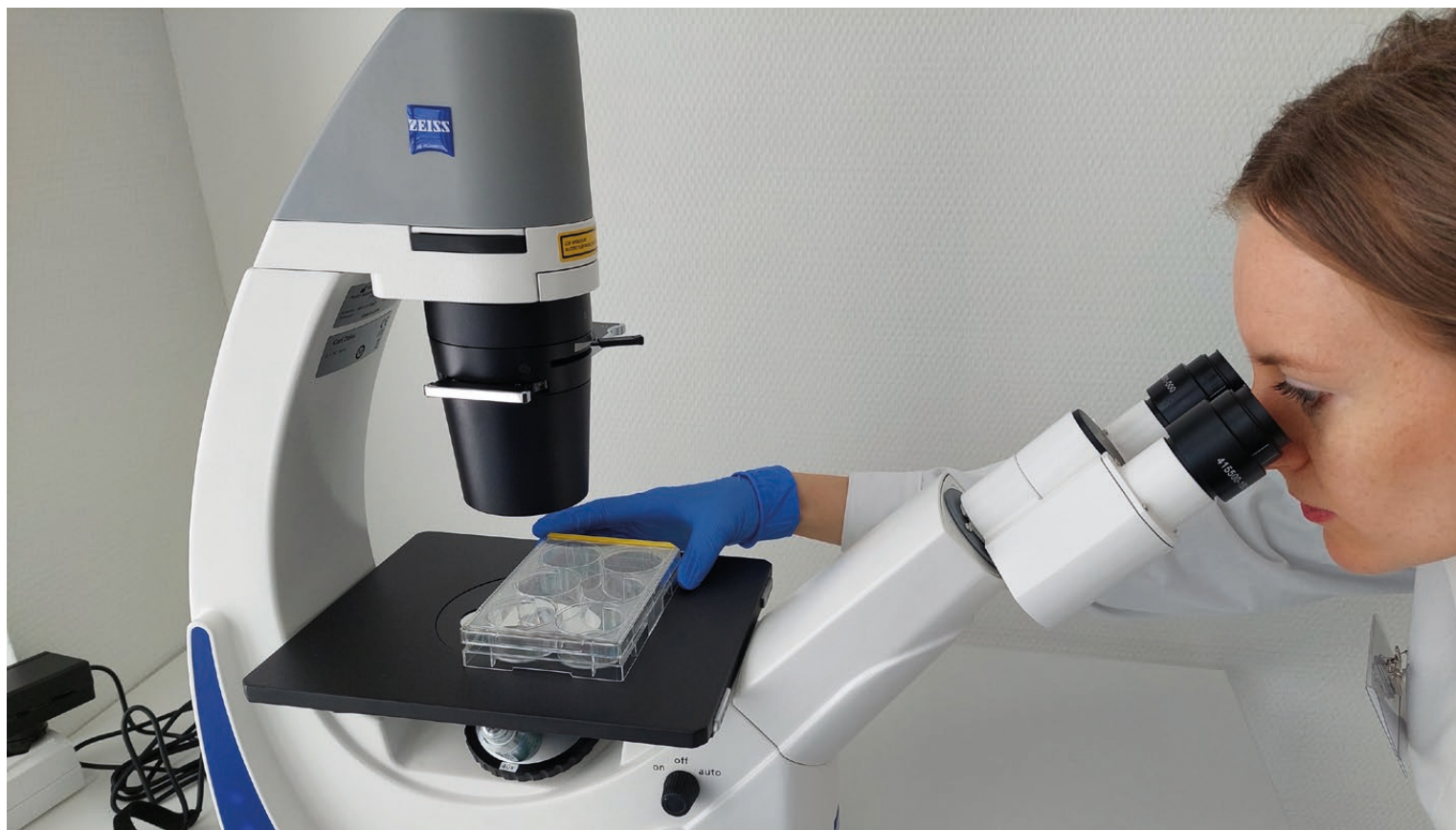
The non-profit Cardio-CARE AG was founded by the Kühne Foundation in January 2020 to strengthen expertise in the field of data analysis at the Medicine Campus Davos and to expand its commitment to cardiology.

Cardio-CARE's main project currently is the largest whole genome sequencing project in the German-speaking countries. In a multidisciplinary collaboration with the Clinic of Cardiology at the University Medical Center Hamburg-Eppendorf (DE) and the Institute of Pathology at the University Hospital Zurich (CH), to sequence the whole genome of more than 9,000 individuals. About 8,000 of the individuals are participants in the Hamburg City Health Study (HCHS), a population-based

study, representative of the inhabitants from the City of Hamburg. The other 1,000 individuals have specific heart diseases, suggesting an influence of genetics on the heart disease.

The aim of the project is to better understand the genetic basis of cardiovascular diseases, to improve diagnostics, and to develop treatments. For this purpose, Cardio-CARE successfully employs artificial intelligence methods. All bioinformatic and biostatistical analyses for this project are performed at Cardio-CARE in Davos using its own high-performance computer.

Further information:
<https://cardio-care.ch/>



CK-CARE Researcher in the laboratory

The biobank managed by Davos BioSciences contains samples from 2,696 patients.

Davos BioSciences

Davos BioSciences AG (DBS) is a non-profit spin-off from CK-CARE and supports pharmaceutical companies in the development of medicines. DBS also operates CK-CARE's biobank and is certified for this activity. DBS can access the extensive data and samples for projects with the research-based pharmaceutical industry. This means that central questions can be answered quickly and flexibly in every phase of preclinical and clinical drug development, in the development, validation and regulatory qualification of diagnostic tests and in clinical studies. At present, the main area of expertise is atopic dermatitis and other allergic diseases and disorders of the immune system.

DBS offers expertise in the management of biobanks, laboratory services and

contract research projects. It supports pharmaceutical companies in the discovery and development of therapeutic approaches and biomarkers and validates new biomarkers and drugs as part of the approval process. Since its inception in 2019, DBS has completed five projects, four projects are in progress and one major project is under negotiation. The CK-CARE biobank managed by DBS contains 2,696 patients (as of December 2023), of whom skin swabs are available from 97%, blood from 85% and skin biopsies from 16%.

The proceeds from DBS flow into the research activities of CK-CARE.

Further information:
<https://www.davosbiosciences.ch/>



Medicine Campus Davos in winter

As in the previous year, the Hochgebirgsklinik came second in the “Best Specialist Clinics in Switzerland” award in the rehabilitation category.

Hochgebirgsklinik Davos

The Hochgebirgsklinik (HGK) and Davos as a therapy center look back on a long history. Already more than 100 years ago, patients came to Davos to benefit from the unique climate. The air is not only particularly dry and pure, but also low in allergens, microbes and pollutants: there are hardly any house dust mites, molds or pollen. This is a unique condition that, along with good treatments, contributes to recovery.

Today, Hochgebirgsklinik Davos (a subsidiary of the Kühne Foundation since 2017) is one of the leading Swiss rehabilitation clinics in the fields of cardiology, pneumology, dermatology, allergology and psychosomatics for adults, adolescents and children. Each treatment and therapy is focused on the personalized needs of the patients, who thus receive optimal treatment. The interdisciplinary networking of academic research, education and treatment in the Hochgebirgsklinik and on the Medicine





Campus Davos makes the latest knowledge directly available to patients.

With its approximately 350 employees, its competent team of doctors and nurses, the wide range of medical and therapeutic services, the new treatment and restaurant facilities, as well as the mountain climate in Davos, the clinic is a very special place for rehabilitation and recovery.

In 2023, the Hochgebirgsklinik Davos once again succeeded in significantly increasing its patient numbers. On average, it treated 170 patients.

In addition, HGK's cardiac rehabilitation programme has now also been included on the definitive hospital list of the Canton of Zug. In addition, the Hochgebirgsklinik was able to successfully confirm its second place in the category of best specialist rehabilitation clinics in Switzerland, which speaks for the outstanding quality of its work. This is another reason why the Kühne Foundation also supports the research work of the doctors at the HGK.

Further information:
<https://www.hochgebirgsklinik.ch/>



Stress test of the cardiovascular system in the cardiology department

Climate Action

Climate change is one of the greatest challenges of our time, and the expected consequences are serious: rising sea levels, shifting climate zones and more frequent and extreme weather events are increasingly affecting people's lives, leading to massive migration, and exacerbating food and water shortages. These impacts will be particularly severe for low- and middle-income countries, which have so far contributed least to the causes of climate change. They will have to cope with the effects of climate change while dealing with other environmental and development issues.



With its new focus on “Climate”, the Kühne Foundation is committed to decoupling growth in prosperity from greenhouse gas emissions and accelerating the transition to a dynamic low-carbon economy, especially in low- and middle-income countries. The foundation also wants to help ensure that logistics and international trade contribute to the transition to a sustainable, low-carbon society.

Climate Center

The Climate Center started operations in 2023. It develops and implements logistics-oriented solutions that reduce emissions, remove CO₂ from the atmosphere, strengthen climate resilience and thus drive the transition to a just, low-carbon society. By 2025, the Center aims to be an established and respected part of the global climate philanthropy community working towards climate-friendly international trade and sustainable low-carbon development.

The Center's work is divided into three interconnected work areas:

Workstream I – Transport and logistics in the low carbon society of 2050

Our work on transport and logistics in the low-carbon society of 2050 looks at the changes needed for the transport and logistics sector to support the low-carbon society of the future. We are working on how the sector needs to adapt to the structural changes in the economy, how it can meet new needs and help accelerate the transition to a low-carbon society.

Beyond decarbonizing its own operations, the transport and logistics sector can make important contributions to accelerating the low-carbon transition,

e.g. by building new low-carbon systems in economically developing countries, delivering low-carbon products, disseminating low-carbon technologies, adapting to strengthen resilience in the face of climate change and providing humanitarian aid in emergencies.

The Climate Center discusses the new services and capabilities that the sector needs to develop and how its services can enable and promote sustainable, low-carbon development at global and local levels.

The knowledge gained from workstream I is incorporated into the activities for applied projects and expertise (workstream II) and the development of skills (workstream III).

The low-carbon society of 2050 will look very different from the society of today.



Workstream II – Applied projects and expertise:

As part of Work Area II, we apply knowledge, insights and expertise in pragmatic climate change mitigation projects, often working with partners from public institutions, philanthropy, academia and industry to accelerate the low-carbon transition. With these projects, we aim to reduce emissions and demonstrate the feasibility of concrete solutions to convince political and economic actors of the potential. The aim is to catalyze a systemic change towards a sustainable society.

Some examples of our current projects:

Green marine fuels from Africa

In 2023, European legislation has been introduced that will increase the demand for low-carbon fuels for ships travelling too, and from EU ports. We want to help African ports seize the opportunity to become suppliers of new low-carbon fuels produced locally with domestic renewable energy.

Green reefer containers

Millions of refrigerated sea containers play an important role in global trade,

but also have a significant and growing impact on the environment. The refrigerants used today are many times more harmful to the climate than CO₂, they contain “forever chemicals” (PFAS) and consume a lot of energy for cooling – better alternatives are available. The use of natural coolants, better insulation in combination with more intelligent energy management can together make a real difference. We are working with industry and academic partners to test new solutions and accelerate the introduction of new, more sustainable refrigerated containers.

Green freight transport in East Africa

Green freight transport programmes are well established in Europe, North America and Asia and are helping to improve the environmental performance of freight transport. To meet the growing demand for climate-friendly supply chains, African companies need access to low-carbon transport and logistics services. We are working with partners in East Africa as well as international industrial, commercial and transport companies to establish a regional green freight transport programme.

Logistics of carbon dioxide removal

As CO₂ emissions continue to rise, there is a growing realization that large-scale carbon dioxide removal (CDR) will also be needed to limit climate change. There are several possible methods that have the potential to remove gigatons of CO₂ from the atmosphere over the next few decades, even if some of them are still in their infancy. If they prove to be safe and effective, some of the methods, such as enhanced rock weathering or ocean alkalinity enhancement will require the transport of billions of tonnes of alkaline minerals. In this project, we are exploring the logistical implications (costs, emissions, investments, technologies, routes, social impacts, etc.) of scaling up such CDR solutions.

Forestry as a carbon sink

Forestry is the most established form of CO₂ storage to date. As a first step towards the direct removal of CO₂ from the atmosphere, the foundation supports forestry projects in New Zealand. Kauri Forestry involves planting fast-growing trees that are then harvested and used as building material. The forests are part of the New Zealand Emissions Trading Scheme.





Workstream III – Building skills for green and resilient development

The transition to a low-carbon economy depends on local skills and expertise. There is a growing demand for graduates and professionals who are familiar with both logistics and climate issues. The Climate Center therefore aims to

work with local education and training partners to provide young people and professionals in low- and middle-income countries with the know-how and skills that are essential for the green transformation. This includes projects in the areas of vocational training, university courses, further training for skilled workers and research.

University of Zurich, Kühne Center for Sustainable Trade and Logistics

Since 2018, the Kühne Foundation has supported the Kühne Center for Sustainable Trade and Logistics in the University of Zurich's Department of Economics. The research center aims to contribute to sustainable global trade by conducting relevant research and making the results accessible to a broad audience. The focus of the research center is on sustainable trade and logistics. The main aim is to understand the role of global trade in combating climate change: Where does global trade help the climate? How can an optimal CO₂ tax be determined? What would more sustainable trade look like? These and other research questions are addressed in the Kühne Center Impact Series. At the heart of the center is the Kühne Endowed Professorship for International Trade, which is held by Professor Ralph Ossa, a leading expert on trade policy and Chief Economist of the World Trade Organization (WTO) since January 2023.

Further information: <https://www.kuehnecenter.uzh.ch/>

Culture

Classical music projects form the focus of the Kühne Foundation's cultural sponsorship activities. It supports a number of renowned festivals as well as opera houses and concert halls and promotes smaller, regional cultural projects in the canton of Schwyz.



Festivals

Salzburg Festival

The Kühne Foundation has been one of the main sponsors of the Salzburg Festival since 2019 and has extended its sponsorship commitment this year until 2027. It has been supporting the “Young Singers Project” since 2013. Working for and with the younger generation is an important part of the Salzburg Festival program. The Young Singers Project was created in 2008 as a high-profile platform for promoting young talents. The young talents who qualify for a scholarship are given the opportunity to work with festival artists, among other things. Their performances are followed closely and often serve as a stepping-stone to start their career.

Lucerne Festival

The Kühne Foundation has been a sponsor of the Lucerne Festival since 2008 and has been the main sponsor since 2020. The Foundation has a particularly close connection to the Lucerne Festival Orchestra, of which it is a partner. The orchestra, which celebrated its twentieth anniversary in 2023, brings together internationally renowned musicians under the direction of Riccardo Chailly for two weeks every summer, ensuring outstanding musical moments in Lucerne.

Kühne Foundation extends main sponsorship of the Salzburg Festival





Special concert by the Philharmonic State Orchestra in honor of Klaus-Michael Kühne

Opera and concert halls

Elbphilharmonie Hamburg

The Kühne Foundation first sponsored the concert activities of the Elbphilharmonie in 2012. Prior to this, it had already co-financed the construction. In 2017, it not only supported the two opening concerts, but also the subsequent opening festival, which lasted several weeks.

Between 2014 and 2020, the Kühne Foundation was the main sponsor of the International Music Festival. This

festival, initially conceived as a biennial, has now firmly established itself in the European cultural calendar and enriches the cultural life of the Hanseatic City due to the variety of artistic offerings and performances by renowned artists, ensembles and orchestras.

In 2021, the Kühne Foundation extended its partnership with the Elbphilharmonie Hamburg and has been a principal sponsor ever since. This sponsorship was recently extended until 2026.

Hamburg State Opera

The Kühne Foundation has supported the Hamburg State Opera for many years, most recently as the main sponsor of the Philharmonic State Orchestra. With a major donation spread over five years, it has made it possible, among other things, to extend the contract of General Music Director Kent Nagano. To mark the end of this long-term sponsorship, the Philharmonic State Orchestra held a special concert for Klaus-Michael Kühne in the Elbphilharmonie in September 2023.

Zurich Opera House

Since the 2019/20 season, the Kühne Foundation has regularly supported the Zurich Opera House, including by sponsoring selected opera productions and the International Opera Studio. In the 2022/2023 season, the Kühne Foundation sponsored the concert performance of the opera “Lakmé” by Léo Delibes.

Performance of the opera “Lakmé” by Léo Delibes at the Zurich Opera House





Left: Gala concert as part of the Music Summer on Lake Zurich
 Right: Opening of the landslide museum



Regional

The Kühne Foundation also supports cultural projects in the Canton of Schwyz. The following projects are just a few examples:

Music Summer on Lake Zurich

Since 1996, the Music Summer on Lake Zurich has enriched the cultural landscape around Lake Zurich with its diverse musical offerings. As part of the series of events, the Kühne Foundation has sponsored a opera gala in the catholic church in Feusisberg for many years.

Symphony Orchestra Canton Schwyz (SOKS)

The Kühne Foundation has regularly supported the Symphony Orchestra Canton Schwyz since 2017. Depending

on the line-up, the orchestra has between 40 and 80 professional musicians, music students and enthusiastic amateur musicians, most of whom come from the canton of Schwyz. In three to four concert sessions per year, the orchestra presents its skills at various venues in the canton.

Landslide Museum

The Kühne Foundation has made a major donation to support the realization of the Landslide Museum at Goldau Zoo. The Goldau landslide exhibition hall impressively presents the dramatic history of the drastic natural disaster of 1806. The highlight of the exhibition is a video installation that brings the three-minute landslide to life in real time.

Contact information

KÜHNE FOUNDATION

Dr. Jörg Dräger,
Executive Director of
the Board of Trustees
Dorfstrasse 50
CH-8834 Schindellegi
Tel. + 41 44 786 95 40
info@kuehne-stiftung.org

KÜHNE LOGISTICS UNIVERSITY

Prof. Dr. Andreas Kaplan,
President
Dr. Immo Schmidt-Jortzig,
Kanzler
Grosser Grasbrook 17
D-20457 Hamburg
Tel. +49 40 328 707 110
info@the-klu.org

HELP LOGISTICS AG

Seán Rafter,
Managing Director
Dorfstrasse 50
CH-8834 Schindellegi
Tel. +41 44 786 96 70
info@kuehne-stiftung.org

LEARN LOGISTICS GMBH

Dr. Andre Kreie,
Managing Director
Grosser Grasbrook 17
D-20457 Hamburg
info@kuehne-stiftung.org

CK-CARE AG

Dr. Claudio Rhyner,
Managing Director
Herman-Burchard-Strasse 1
CH-7265 Davos Wolfgang
Tel. +41 81 410 13 00
info@ck-care.ch

CARDIO-CARE AG

Prof. Dr. Andreas Ziegler,
Managing Director
Herman-Burchard-Strasse 1
CH-7265 Davos Wolfgang
info@cardio-care.ch

DAVOS BIOSCIENCES AG

Dr. Claudio Rhyner,
Managing Director
Herman-Burchard-Strasse 9
CH-7265 Davos Wolfgang
Tel. + 41 81 410 08 51
info@davosbiosciences.ch

HOCHGEBIRGSKLINIK DAVOS AG

Evelyne Wirz Eberle,
CEO
Herman-Burchard-Strasse 1
CH-7265 Davos Wolfgang
Tel. + 41 84 417 30 50
info@hgk.ch

Imprint

Editor

Kühne Foundation
Dorfstrasse 50
CH-8834 Schindellegi
Tel. +41 44 786 95 40
info@kuehne-stiftung.org
www.kuehne-stiftung.org

Photo Credits

Page 09-11: KLU: ©Kühne Logistics University / Christin Schwarzer / Robert Kiehn
Page 12-13: HELP: © IFRC / Corrie Butler
Page 14-15: LEARN: ©LEARN
Page 22-23: HGK: Hochgebirgsklinik ©Fiona Piola/©Oliver Oettli
Page 28: Salzburger Festspiele: ©Marco Borrelli
Page 29: Hommage concert by the Philharmonic State Orchestra in honor of Klaus-Michael Kühne @Michael Zapf
Page 30: Performance of the opera "Lakmé" by Léo Delibes at the Zurich Opera House ©Toni Suter

